

Kettlethorpe High School Progression Steps

Art – Year 8

Self- portrait in pencil, tonal shaded and
self- portrait in Picasso's 'weeping woman'
style.

9B

- This work demonstrates exceptional use of tonal shading, using different textures.
- Proportion of facial features are correct.
- The painting reflects exceptional understanding of 'the weeping woman'.
- Shows exceptional use of acrylic paint and painting techniques. Painting shows great use of colours and creativity.



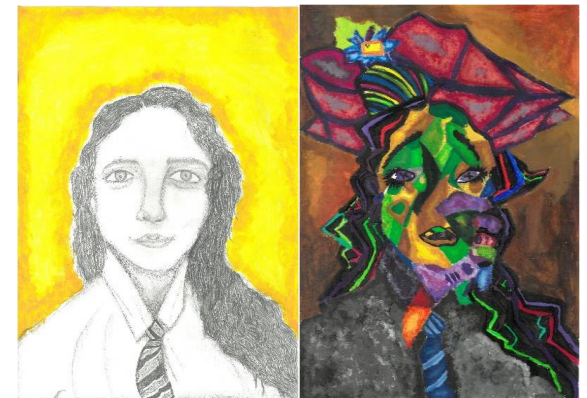
8A - 8C

- This work demonstrates excellent use of tonal shading, using different textures.
- Proportion of facial features are correct.
- The painting reflects excellent understanding of 'the weeping woman'.
- Shows excellent use of acrylic paint and painting techniques.
- Painting shows great use of colours and creativity.

8A



8C



7B

- This work demonstrates excellent use of tonal shading, using different textures.
- Proportion of facial features are correct.
- The painting reflects the style of the 'weeping woman'.



6A – 6C

- This work demonstrates good drawing techniques and painting skill.
- One piece is slightly weaker in the tones that they have used.
- This is at the standard for year 8 ability.
- Face is in proportion and demonstrates a good understanding of facial features.
- The painting shows good use of acrylic and an understanding of the 'weeping woman' style

6A



6C



5B

- This work is working towards where a year 8 pupil should be.
- They show some understanding of proportion and the use of tones.
- Tonal work needs more range to gain a higher level.
- The painting shows some understanding of the use of paint and the 'weeping woman' style..

