

# Doncaster Equine College Prospectus

# Contents



[Open Days](#)

[Career Paths](#)

[Level 1 Diploma in Work Based Horse Care \(1st4sport\)](#)

[Level 2 Diploma or Extended Certificate in Horse Care \(City & Guilds\)](#)

[Level 2 Technical Certificate in Equine Care \(City and Guilds\)](#)

[Level 3 Advanced Technical Diploma in Equine Management \(City & Guilds\)](#)

[Level 3 Advanced Technical Extended Diploma in Equine Management \(City & Guilds\)](#)

[Level 2 Equine Groom Apprenticeship Standard](#)

[Level 3 Apprenticeship Senior Equine Groom Standard](#)

[Facilities for Hire](#)

[Shop](#)

[DEC Annual Show](#)

[How to find us](#)

# Open Days

Doncaster Equine College holds open days throughout the year which provide young people, their parents, guardians, carers and career advisors with the opportunity to have a look around the College and to meet the learners who are studying an equine course.

The day starts with a tour of the yards, a presentation and meet the team. You will also have the opportunity to have an interview.

Please note the majority of the open day takes place outside, so wear clothing and footwear suitable for the weather conditions.



**For dates and to book please visit our website.**

For further information please telephone 01302 861000  
or email: [info@doncasterequinecollege.co.uk](mailto:info@doncasterequinecollege.co.uk)  
[www.doncasterequinecollege.co.uk](http://www.doncasterequinecollege.co.uk)



# Career Paths

There are many different career options for those who are interested in working with horses following completion of DEC courses. You may want to progress onto the next suitable DEC course for you, or look at the various equine careers available.

Completion of the courses can lead to various possibilities for those seeking an equine career at different levels, in a number of different disciplines such as: Dressage, Eventing, Polo, Hunting, Showing and Show Jumping.

You may decide that you want to work with racehorses and apply for the National Horseracing College (NHC) residential foundation course. For further information on this course and for career paths please visit the NHC website at [www.theNHC.co.uk](http://www.theNHC.co.uk). Completion of this would lead to an apprenticeship with a racehorse trainer as a racing groom which could lead to careers such as: Racing Groom, Yard Groom, Exercise Rider, Jockey, Travelling Groom, Racing Secretary, Pupil Assistant, Assistant Trainer and Trainer.

“

**If you have interest in horses, go for it. The instructors are very knowledgeable and supportive and the instructors work with you individually to get you where you need to be. The horses are amazing and my time at DEC has been a great experience.**

”

**Brooke is now pursuing her dream to work towards becoming an equine dentist while working on a livery yard.**

For further information please telephone 01302 861000  
or email: [info@doncasterequinecollege.co.uk](mailto:info@doncasterequinecollege.co.uk)  
[www.doncasterequinecollege.co.uk](http://www.doncasterequinecollege.co.uk)



# Level 1

## Diploma in Work Based Horse Care (1st4sport)

The Doncaster Equine College Level 1 Horse Care Course is designed to provide you with the skills and a vocational qualification so that you can work within the equine industry.

The Level 1 study programme is made up of horse care, English, Maths and personal and professional development.

The course is for those age 16+. No previous horse care experience is required. Candidates must have a keen interest in horse care. We have a maximum weight limit of 13 stone for all riders.

### About the course

- Programme runs from September to July
- Full time, minimum 17½ hours per week
- Riding or non riding option
- Progression onto Level 2 Horse Care

### Course Units

- Putting on and taking off tack
- Cleaning tack and horse clothing
- Putting on and taking off horse rugs
- Feeding and watering horses
- Leading and controlling a horse for inspection under direction
- Catch and move horses under direction
- Assist with cleaning the stables and yard
- Groom and wash horses under direction
- Maintain Health and Safety in the Workplace
- Maintain good working relations with others

### Additional Qualifications

Functional skills Maths and English.

For further information please telephone 01302 861000  
or email: [info@doncasterequinecollege.co.uk](mailto:info@doncasterequinecollege.co.uk)  
[www.doncasterequinecollege.co.uk](http://www.doncasterequinecollege.co.uk)



# Level 2

## Diploma or Extended Certificate in Horse Care (City & Guilds)

This pathway is aimed at someone who wants the more practical route

The course consists of portfolio evidence and practical skills which are assessed and marked at Pass, Merit and Distinction. Your Level 2 study programme is made up of horse care and riding and personal and professional development.

For those age 16+. For the riding option, you must be able to ride at walk, trot and canter safely, with some previous horse care experience required. A maximum weight limit of 13 stone for riders. Must have GCSE at 2 or 3 or above in Maths and English or functional skills level 1. Candidates must have a keen interest in horse care and would be expected to complete a skills test to demonstrate they are working at level 1 standards.

### About the course

- Programme runs from September to July
- Full time, minimum 17½ hours per week
- Riding or non riding option
- Progression onto Level 3 Horse Care

### Mandatory Units

- Undertake Work Related Experience in the Land-based Industries (120hrs)
- Carry Out and Understand the Principles of Feeding and Watering Horses
- Undertake Routine Stable Duties
- Undertake Horse Handling

### Optional Units

- Fit and Maintain Horse Tack and Clothing
- Introduction to Riding Horses on the Flat
- Understand the Principles of Horse Biology
- Undertake Horse Grooming, Trimming and Plaiting
- Introduction to Lunging Horses

For further information please telephone 01302 861000

or email: [info@doncasterequinecollege.co.uk](mailto:info@doncasterequinecollege.co.uk)

[www.doncasterequinecollege.co.uk](http://www.doncasterequinecollege.co.uk)



# Level 2

## Technical Certificate in Equine Care (City and Guilds)

This route is for someone who intends to go to university

The level 2 study programme is made up of horse care and riding and personal and professional development. Work will be assessed using written assignments, practical assessments and externally marked exams.

The course is for those age 16+. For the riding option, you must be able to ride at walk, trot and canter safely. A maximum weight limit of 13 stone for riders. GCSE at 4 or above in Maths and English or Level 2 Functional Skills in Maths and English is required. Candidates would be expected to complete a skills test to demonstrate they are working at level 1 standards.

### About the course

- Programme runs from September to July
- Full time, minimum 17½ hours per week
- Riding or non riding option
- Progression onto Level 3 Horse Care

### Mandatory Units

- Health and safety for the land-based industries
- Working in the equine industry
- Equine health and welfare
- Horse tack and equipment
- Undertake routine stable duties
- The principles of feeding and watering horses
- Horse handling and grooming
- Introduction to lunging horses
- 150hrs work experience

### Optional Units

- Equine anatomy and physiology
- Horse behaviour
- Riding horses on the flat
- Riding horses for exercise
- Keeping horses at grass
- Land and environmental business

For further information please telephone 01302 861000

or email: [info@doncasterequinecollege.co.uk](mailto:info@doncasterequinecollege.co.uk)

[www.doncasterequinecollege.co.uk](http://www.doncasterequinecollege.co.uk)



# Level 3

## Advanced Technical Diploma in Equine Management - 540, 1st year (City & Guilds)

For entry onto this course, candidates must have evidence of horse care experience required to meet the standard of a level 2 candidate. A skills test will be undertaken by all applicants. A minimum of Level 2 Functional Skills or GCSE grade 4 or above in Maths and English, plus 2 other GCSE's, at grade 4 or above are required.

### About the course

- For those age 16+
- Programme runs from September to July
- Full time, minimum 17½ hours per week
- Riding or non riding option

### Year 1 Mandatory Units

- Principles of health and safety
- Undertake and review work related experience in the Land-based Industries
- Undertake stable yard operations
- Equine Health
- Horse tack and equipment
- Biological systems of horses
- Prepare horses for presentation
- Equine feeding and nutrition
- Horse behaviour and welfare

### Plus a one from here

- Working and training horses from the ground
- The principles of equitation
- Contribute to Managing an Equine event
- The principles of horse fitness
- Exercising horses
- Undertake estate skills
- The principles of competition grooming
- Business management in the Land-Based sector

For further information please telephone 01302 861000  
or email: [info@doncasterequinecollege.co.uk](mailto:info@doncasterequinecollege.co.uk)  
[www.doncasterequinecollege.co.uk](http://www.doncasterequinecollege.co.uk)





# Level 3

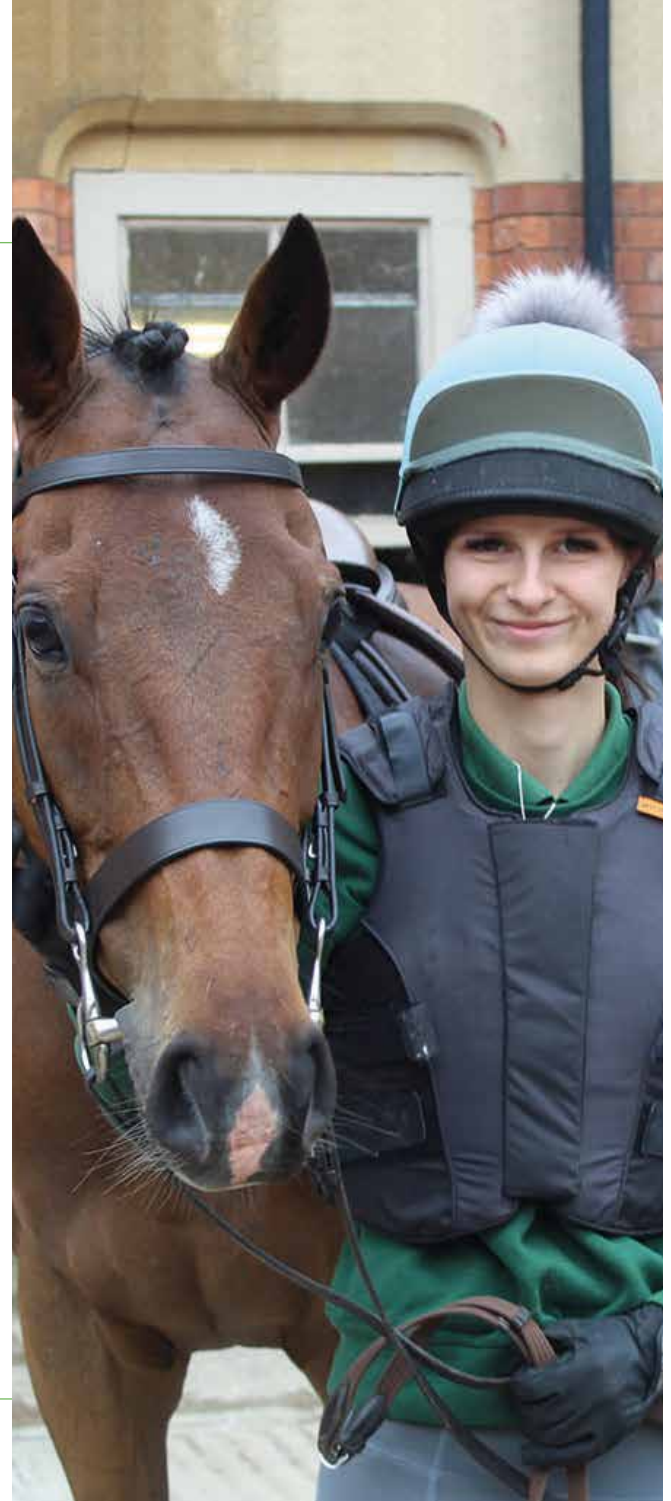
## Advanced Technical Extended Diploma in Equine Management - 1080, 2nd Year (City & Guilds)

### Course Units

- Receive a horse and carry out an initial assessment
- Plan diets and implement feeding regimes for horses
- Monitor and maintain stocks of feed and bedding
- Promote the health and well being of horses
- Deliver basic health care treatment to horses
- Promote, monitor, and maintain health and safety
- Manage your own resources
- Tack up horses for specialist work
- Prepare horses for public
- Care for horses after competition
- Clip horses
- Contribute to the design and implementation of a work program
- Prepare and maintain grazing land
- Manage horses when turned out

### Progression onto Higher Education could lead to:

- Equine Veterinary Technician
- Farrier
- Jockey
- Equine Dentistry
- Equine Physiotherapy
- Equine Nutrition
- Master Saddler



For further information please telephone 01302 861000  
or email: [info@doncasterequinecollege.co.uk](mailto:info@doncasterequinecollege.co.uk)  
[www.doncasterequinecollege.co.uk](http://www.doncasterequinecollege.co.uk)



# Level 2

## Equine Groom Apprenticeship Standard

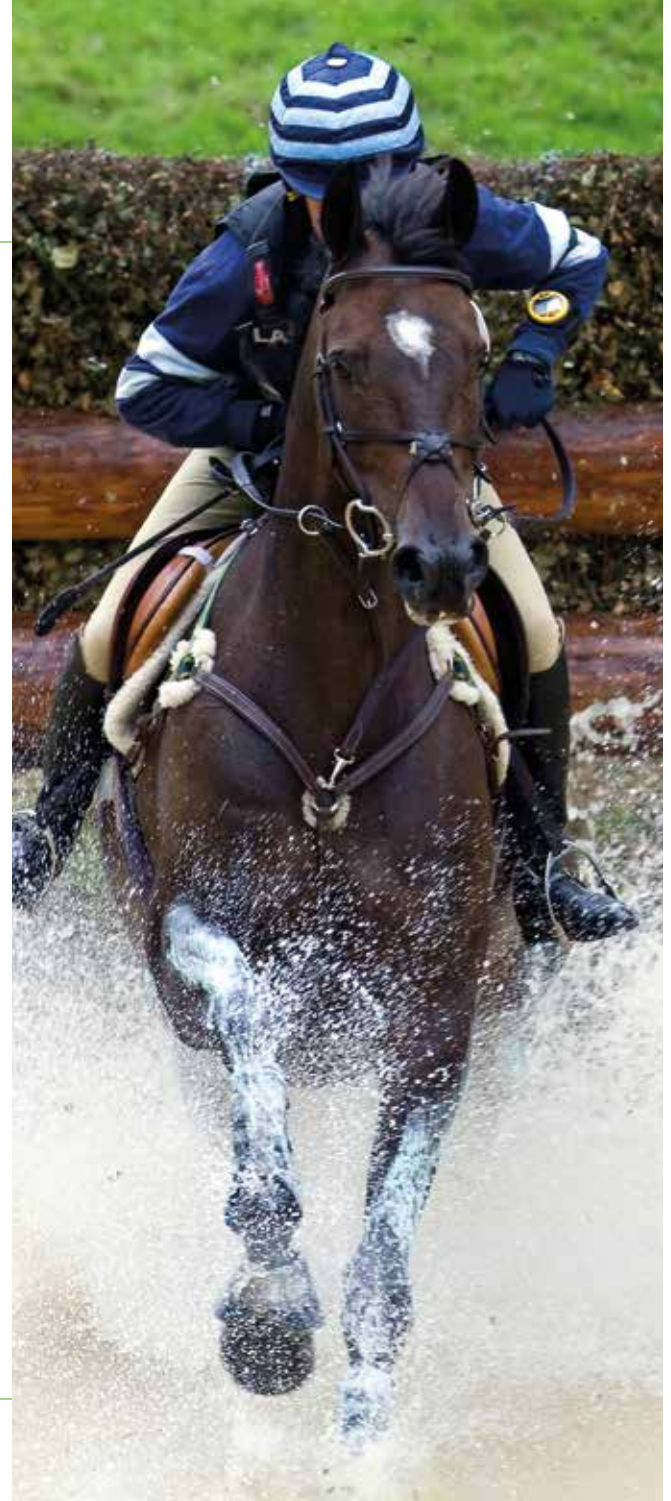
Learners who successfully complete a Level 1 Horse Care qualification or have the equivalent experience may undertake the Level 2 Apprenticeship. This programme will include a Level 2 Equine Groom Apprenticeship Standard together with Functional Skills in English and Maths at a minimum Level 1.

The apprenticeship will be completed largely at the learner's place of work. A Roving Tutor will visit every 8 - 10 weeks with a final one day assessment. Open to anyone aged 16 or over, who works more than 30 hours per week within an equestrian discipline. Successful completion can lead onto the Level 3 Apprenticeship.

### Course Units

The minimum duration of each apprenticeship is based on the apprentice working at least 30 hours a week, including any off-the-job training they undertake.

- Safe Working Practices
- Yard and Field Routines and Duties
- Horse Anatomy, Physiology and Welfare
- Horse Handling, Care and Appearance
- Saddlery and Equipment
- Travelling Horses
- Non-Ridden Exercise
- Pathway: Riding or Non Riding
- Behaviours



For further information please telephone 01302 861000

or email: [info@doncasterequinecollege.co.uk](mailto:info@doncasterequinecollege.co.uk)

[www.doncasterequinecollege.co.uk](http://www.doncasterequinecollege.co.uk)



# Level 3

## Apprenticeship Senior Equine Groom Standard

Level 3 Apprenticeship is an ideal way to increase your existing knowledge. Completion of this course is a statement of practical competence to perform the required duties in your role. This includes Level 3 Senior Equine Groom Standard together with Functional Skills in English and Maths at Level 2.

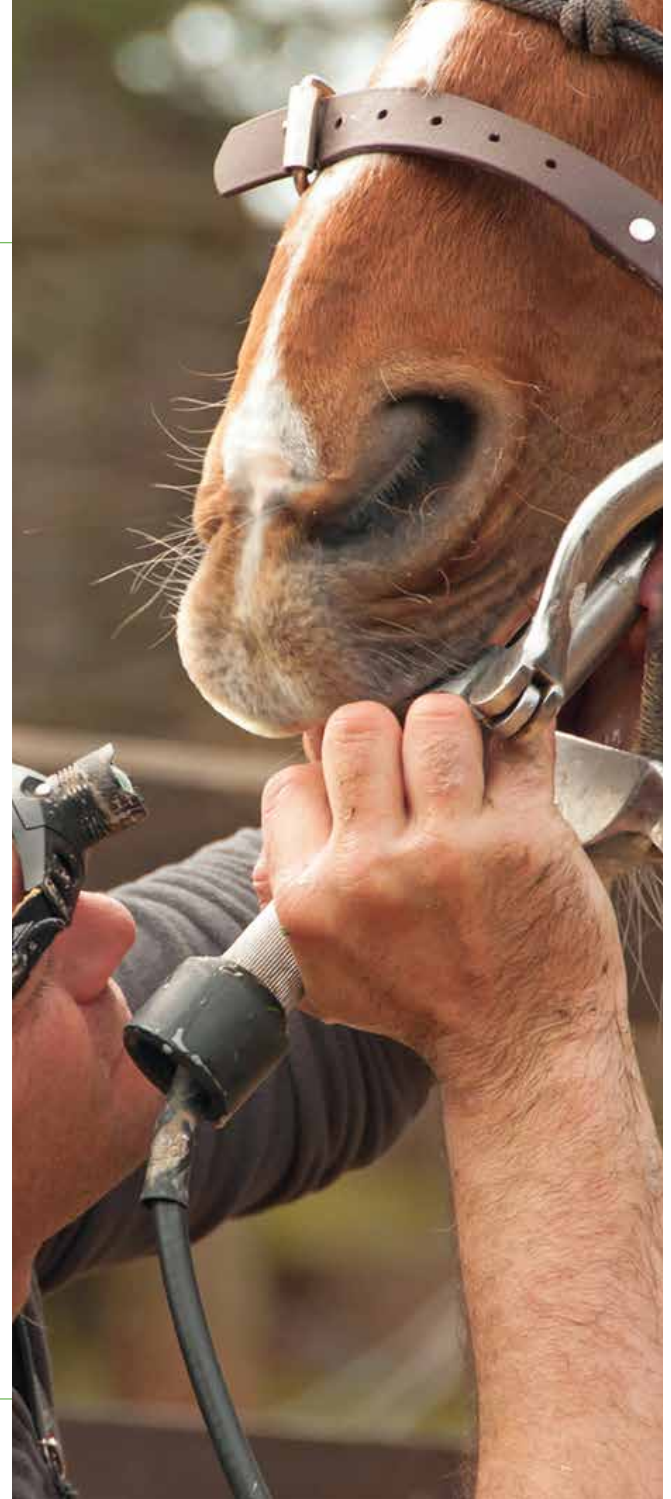
The apprenticeship is completed largely at the learner's place of work. A Roving Tutor will visit every 8 – 10 weeks with a final one day assessment. Open to anyone aged 16 or over, who works at least 30 hours a week, within an equine discipline.

### Course Units

The minimum duration of each apprenticeship is based on the apprentice working at least 30 hours a week, including any off-the-job training they undertake.

- Safe Working Practices
- Yard and Field Routines and Duties
- Horse Anatomy, Physiology and Welfare
- Horse Handling, Care and Appearance
- Nutrition and Fitness
- Travelling Horses
- Non-Ridden Exercise
- Pathway: Riding or Non Riding
- Behaviours

For further information please telephone 01302 861000  
or email: [info@doncasterequinecollege.co.uk](mailto:info@doncasterequinecollege.co.uk)  
[www.doncasterequinecollege.co.uk](http://www.doncasterequinecollege.co.uk)



# Facilities for Hire

---

Doncaster Equine College based at the National Horseracing College is set in an area of natural beauty. It boasts some of the best equestrian facilities Yorkshire has to offer. Easily reached by all major road networks including the A1 and M18, the College offers the ideal location to host a varied range of equestrian pursuits. Individual, group and event bookings welcome.

## Indoor Riding Arenas

The 60 X 40m indoor riding arena benefits from a silica sand with additive mix surface with generous lighting and communal viewing gallery. The school has access on two sides, and an automatic watering system for dust prevention with full BS standard show jumps and indoor x country fences on request – an excellent venue for hosting competitions.

The 20 x 40m indoor riding arena is positioned next to the 60 x 40m arena and shares the communal viewing gallery ideal for a warmup area or hosting competitions.

## Woodchip Gallop

The College boasts an oval, seven furlong gallop which lends itself well to endurance and stamina training. The gallop is fully railed and benefits from furlong markers.

## Canter ring

The one furlong canter ring is fully railed with an all weather surface.

## Grass Gallop

The grass gallop is situated inside the oval all-weather gallop. A set of 10 bay starting stalls and regulation hurdles and steeplechase fences are available adjacent to the grass gallop. The area within the oval gallop is situated in a beautiful setting surrounded by trees, 25 acres of flat, mown grass for rings. A stone access road provides easy access for all types of vehicle. It is an ideal facility for summer shows, competitions and tournaments.

## Racehorse Simulators

Housed in the Victorian stable yard are two racehorse simulators. The room has mirror facilities and audio visual equipment on which to view previously recorded riding footage.

## Dressage Simulator

The Dressage Simulator accommodates riders of all levels from beginners to the advanced. This horse allows you to practice advanced dressage movements, such as: Piaffe, Passage and Half Pass and can also be used for basic arena work.

## Parking Facilities

Adjacent to the indoor riding arenas is the large hard standing car park and horsebox parking area. Access to water is also available as are female and male toilets and washing facilities.

## Conference Facilities

The Visitor Centre is an ideal place to escape from the distractions of the city. The conference and meeting rooms overlook the gallops, and offer a unique, tranquil environment in which to meet clients and develop your business. The conference rooms, which boast air conditioning, natural daylight and disabled access, offer a combination of seating styles to suit your event. A wide range of audio visual and technical equipment and free WiFi are available in the conference and meeting rooms. The car park, which is adjacent to the entrance reception, offers ample, complimentary parking.

# Shop

The Doncaster Equine College has an onsite and online shop stocked with all the items required by learners at the college.

The onsite shop is located in the Visitor Centre at the college, equipped with fitting rooms and has a good selection of jodhpurs, boots, gloves, socks, hats, body protectors, gifts and horse treats available for learners and visitors on site. Safety is a priority at the College, and therefore experienced staff are on hand to fit riding hats and other equipment to ensure a safe and comfortable fit.

NHC are stockists of Charles Owen, Racesafe, Zilco and Tuffa, plus much more, offering a good selection of choice for learners and other equine enthusiasts.

For the online shop please visit the NHC website;  
[www.thenhc.co.uk/shop/](http://www.thenhc.co.uk/shop/)



For further information please telephone 01302 861000  
or email: [info@doncasterequinecollege.co.uk](mailto:info@doncasterequinecollege.co.uk)  
[www.doncasterequinecollege.co.uk](http://www.doncasterequinecollege.co.uk)



# DEC Annual Show

Each year DEC learners are involved in the organisation of the show to demonstrate what they have achieved over the year and to compete with members of the public. This gives learners the opportunity to gain experience of planning and preparing equine events, while taking part also in the show classes.

Each year a variety of businesses support the show by sponsoring and providing raffle prizes, which helps to raise valuable funds to contribute towards the costs of equipment for the horses and valuable activities for the learners.

There are a variety of similar events held at the College that involve learners, which include dressage and show-jumping. For dates, schedules and more information please check the DEC website and follow Doncaster Equine College on social media for regular updates.

[www.doncasterequinecollege.co.uk](http://www.doncasterequinecollege.co.uk)



For further information please telephone 01302 861000  
or email: [info@doncasterequinecollege.co.uk](mailto:info@doncasterequinecollege.co.uk)  
[www.doncasterequinecollege.co.uk](http://www.doncasterequinecollege.co.uk)



# How to find us

## From the M1/M18

1. Leave M1 at junction 32, then join the M18 motorway signposted "The North".
2. Leave the M18 at junction 3, the A6182 exit to Doncaster.
3. At the roundabout take the 3rd exit onto Great Yorkshire Way/A6182.
4. At the roundabout take the 1st exit and stay on the Great Yorkshire Way.
5. At traffic lights slight right onto Bawtry Road/A638, continue to follow A638 towards Bawtry.
6. At the roundabout follow signs for A638 Great North Road.
7. Continue past the Mount Pleasant Hotel on your right.
8. The entrance to the College is signposted and is on your right.

## From the A1 (travelling from the South)

1. Leave the A1 at junction 34. On the 1st roundabout take the 4th exit, then at 2nd roundabout take the 1st exit onto the A614, signposted Bawtry
2. At roundabout take the 1st exit onto the A638 signposted Bawtry
3. Entering Bawtry continue straight on, A638 (Great North Road) signposted Doncaster
4. Keep on the A638 and you will pass a caravan centre on your right, followed by a water tower on your left, and then the Paintball Fields and RSPCA Centre - also on your left. Approximately 50 yards further on you will see the NHC gallops on the left hand side.
5. The entrance to the College is signposted about another 100 yards on your left.

Please note, using the postcode alone may take you to an incorrect address. Alternatively you can find us using What3Words. For Doncaster Equine College Visitor Centre use ///tribes.engulfing.expired and this will take you to the Visitor Centre Car Park.

For further information please telephone 01302 861000  
or email: [info@doncasterequinecollege.co.uk](mailto:info@doncasterequinecollege.co.uk)  
[www.doncasterequinecollege.co.uk](http://www.doncasterequinecollege.co.uk)





Doncaster Equine College  
The Stables | Rossington Hall | Great North Road | Doncaster DN11 0HN

T 01302 861000

E [info@doncasterequinecollege.co.uk](mailto:info@doncasterequinecollege.co.uk)

W [www.doncasterequinecollege.co.uk](http://www.doncasterequinecollege.co.uk)



Registered Charity No. 700405. Company Registration No. 2266267. VAT Registration No. 738 2938 95.  
Whilst every effort has been made to ensure the accuracy of this prospectus the College reserves the right to make amendments. Some details may also be subject to changes beyond our control, such as those made by Government or awarding bodies. We cannot be held responsible for the consequences of any inaccuracies or omissions but aim to provide updates details to applicants as soon as they are available.