



Mrs Paul
Headteacher

Introduction to Kettlethorpe High School

Mission

“Together, be the best we can be”

Vision

Present

Achieving

Excelling

Ethos

Responsible – Resilient – Reflective – Respectful

Kind

Kettlethorpe
HIGH SCHOOL

Y6 to Y7 Transition Evening

Thursday 3rd July 2025

Timetable for Induction Evening 3rd July 2025

	Forms 01 - 06	Forms 07 - 12
5 – 5.45	Tutor Group Presentation Y7 Tutor	Main Hall Presentation <ul style="list-style-type: none"> • Mrs Paul • Mr Bruce-Halliwell • Mrs Shute • Miss Caves
5.45 - 6	Changeover	
6 – 6.45	Main Hall Presentation <ul style="list-style-type: none"> • Mrs Paul • Mr Bruce-Halliwell • Mrs Shute • Miss Caves 	Tutor Group Presentation Y7 Tutor
6.45 - 7	Close and Q&A (in Main Hall) Mr Bruce-Halliwell Mrs Shute SLT SEND Miss Caves Music services - IBE	

Please note: The Uniform Shop will close at 7.30pm this evening.

Further opening times over the holidays can be found at

www.kettlethorpehigh.co.uk

Form Tutor Room Locations

01 - 06	Teacher	Room	07 - 12	Teacher	Room
701	Miss J Hussein (CMI)	MA1	707	Mr J Newton	SC1
702	Mr S Booth	EN8	708	Mr K Woodward	IT1
703	Miss G Couzens	EN10	709	Mrs N Leonard	MA8
704	Mr J Rawling	SC2	710	Mrs S Packham/ Miss C Patterson (ABR)	EN15
705	Miss E Ridley	MA5	711	Miss E Horner (SNA)	AD3
706	Miss N Millar (EBO)	TC4	712	Mrs G Greenwood/ Mrs S George	TC1



Key Staff

- **Mrs R Paul** (*Headteacher*) – Introduction to the School
- **Mr C Bruce-Halliwell** (*Deputy Headteacher*) (25/26) – Curriculum and Pupil Experience
- **Mrs V Shute:** (*Y7 Progress Leader & Transition Lead*)– Values and expectations at Kettlethorpe High School & transition timeline
- **Miss S Caves:** (Y7 Year Manager)
- **Mrs S Morley:** New SENCo (25/26)





Mr Bruce-Halliwell

Curriculum; Pupil Experience; Working Together

Visualisation of **excelling** at Kettlethorpe

I am kind, responsible, resilient, reflective and respectful.

I am aspirational for me and my friends.

I am happy and motivated.

I am a life-long learner.

I am able to communicate clearly and interact well with others.

I am aware of the online world both risks and rewards.

I am literate and numerate, including digital literacy and financial awareness.

I am part of the community.

I am confident.

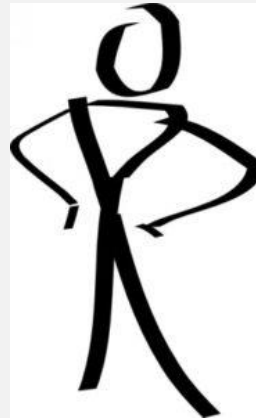
I can identify mistakes.

I can work independently or as part of a team.

I can self-regulate both in my learning and emotions.

I can form and sustain friendships and positive relationships with others.

I can demonstrate empathy and understanding for others.



Kettlethorpe
HIGH SCHOOL

I know where to access the support I need.

I know my goals and my next steps in achieving these.

I understand risk and how to manage this in life.

I understand my rights and responsibilities.

I understand the importance of healthy living including nutrition, exercise and sport

I understand the wide range of future pathways post-16.

I understand the wide range of career choices available to me.

I have good self-esteem and understand how to protect my mental health.

I have made a positive contribution to my school and local community.

I have experienced the world beyond my own immediate context.

I have the qualifications I need.

I have experienced different cultures and aspects of culture more generally.

I have transferrable knowledge and skills.

I have an excellent attitude to learning and attendance.



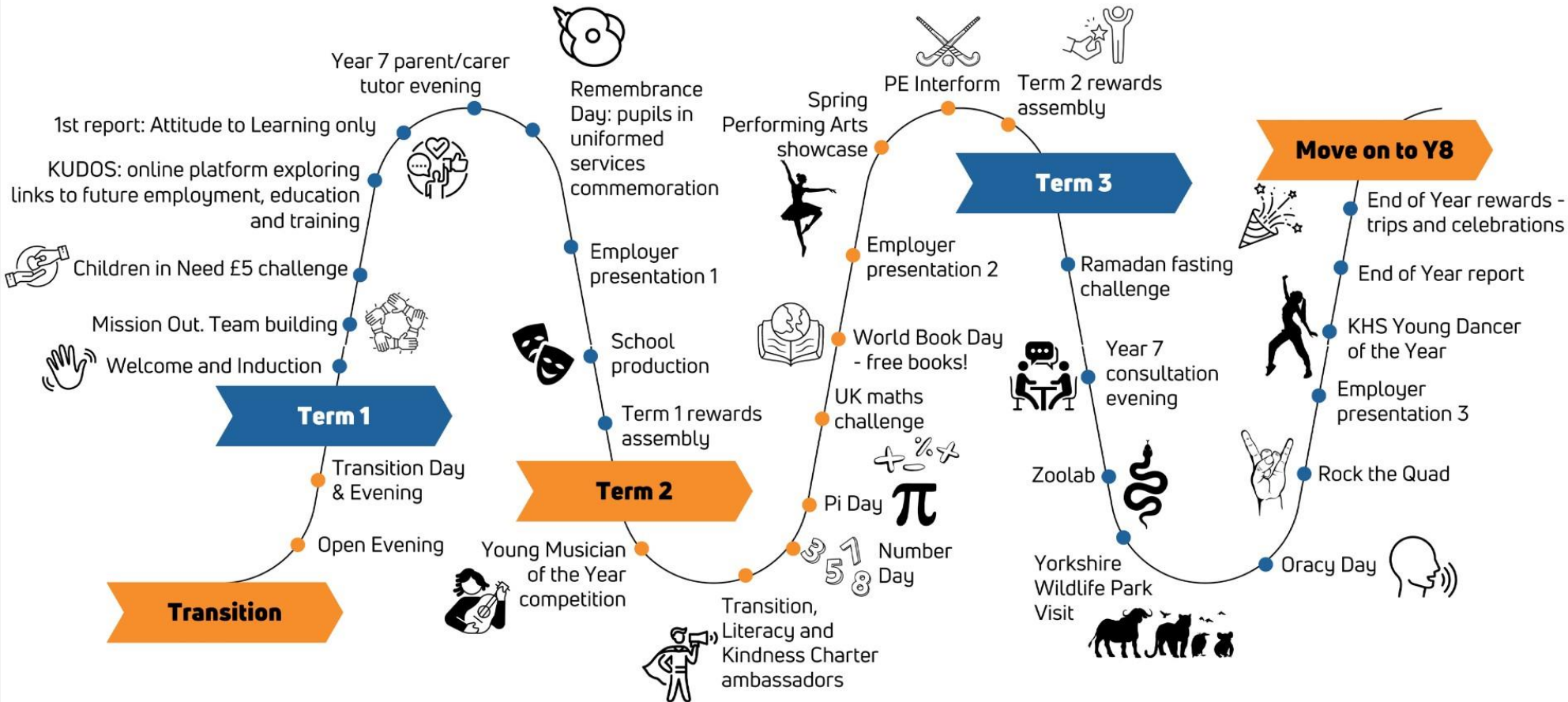
At Kettlethorpe High School, our core vision ‘**together, be the best we can be**’ runs through all that we do. It is not just a motto, but a philosophy that guides us all. We are proud of our curriculum, which is holistic and seeks to bring together the academic, vocational, co-curricular and personal development of all pupils which gives all those who attend this school a shared sense of belonging and community through their experience. We have three core missions for those in our community, that all are:

- **Present**
- **Achieving**
- **Excelling**

KS3 per fortnight	
English	8
Maths	8
Science	6
French/Spanish	4
DT/Textiles/Food/ Computing	6
PE	4
Geography	3
History	3
Dance/Drama	2
Music	2
RE	2
Art	2
PSHE	Tutor Time
Total	50

Journey to the best you can be:

Year 7



Extra Curricular Programme:

<https://kettlethorpehigh.co.uk/extra-curricular/>

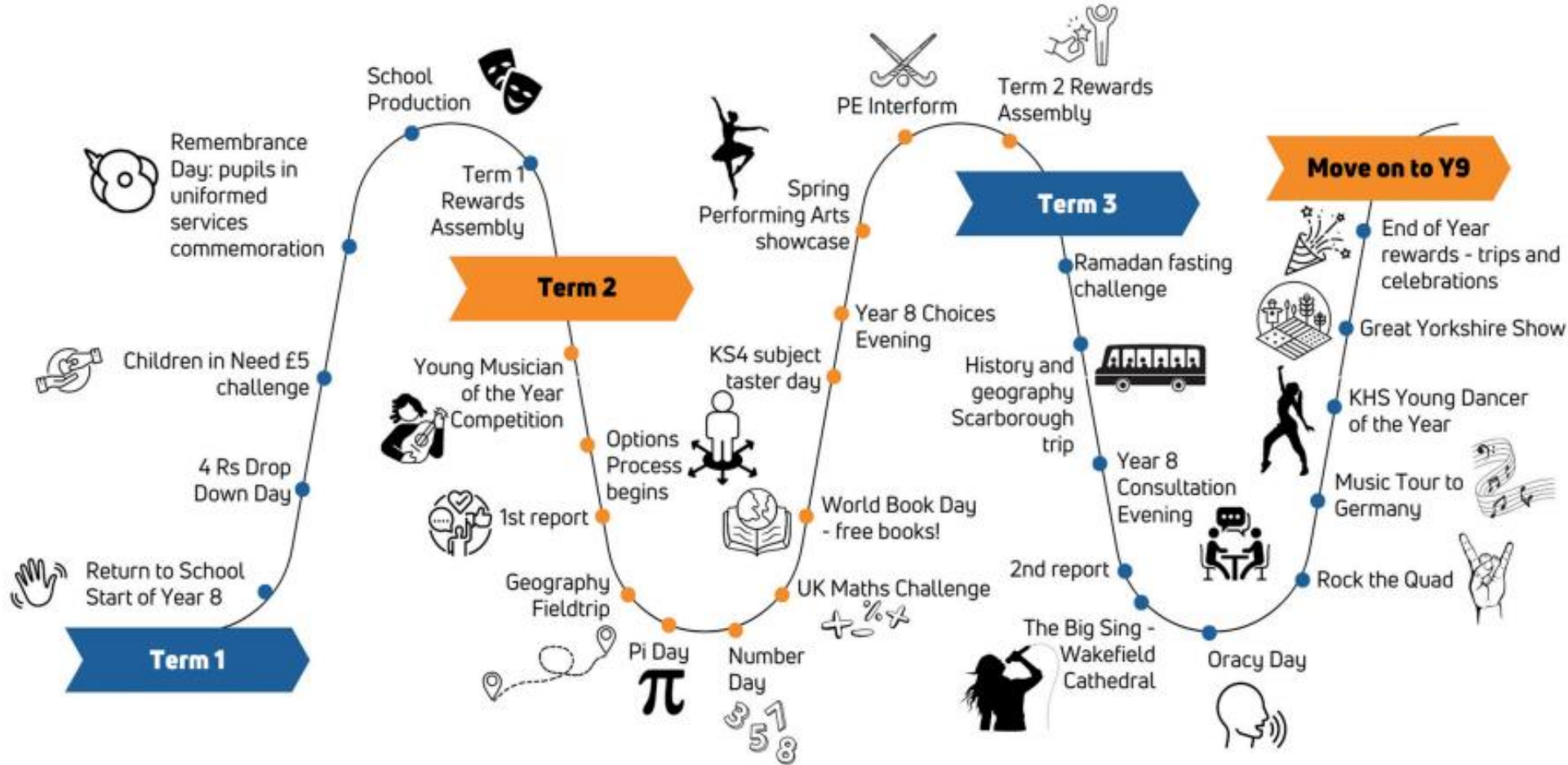
We are kind. We are Kettlethorpe

Art | DT | Digital Subjects | English | Geography | History | Languages | Maths | PE | Performing Arts | RE | Science

**Kettlethorpe
HIGH SCHOOL**

Journey to the best you can be:

Year 8



Extra Curricular Programme:
<https://kettlethorpehigh.co.uk/extra-curricular/>

We are kind. We are Kettlethorpe

Art | DT | Digital Subjects | English | Geography | History | Languages | Maths | PE | Performing Arts | RE | Science

Kettlethorpe
HIGH SCHOOL

Parent/Carer Engagement

- School strategy to improve and develop parent/carers engagement: 3 year plan involving staff at Kettlethorpe High School and parents/carers of pupils
- Research clearly shows the positive impact for pupil outcomes if parent/carers and schools have effective relationships



Uniform Shop

Summer Opening Times



Monday 4th August - 9am - 4pm
Tuesday 5th August - 9am - 3pm
Tuesday 5th August - 5pm - 7pm
Wednesday 6th August - 9am - 4pm
Thursday 7th August - 9am - 4pm
Friday 8th August - 9am - 4pm

(Monday 25th August BANK HOL - closed)

Tuesday 26th August - 9am - 4pm
Wednesday 27th August - 9am - 4pm
Thursday 28th August - 9am - 3pm
Thursday 28th August - 5pm - 7pm
Friday 29th August - 9am - 4pm



J'aime télécharger
films car cest
I like to download
because it is

Welcome to Kettlethorpe High School

Kettlethorpe

Uniform Shop

Summer Opening Times

[Absence and Attendance](#)[Essential School Information](#)[Exams](#)[Forms](#)[Key Stage 3](#)[Key Stage 4](#)[Newsletters](#)[Parental Apps](#)[Support](#)[Uniform](#)[Y6 Transition](#)

Monday 4th August - 9am - 4pm
Tuesday 5th August - 9am- 3pm
Tuesday 5th August - 5pm - 7pm
Wednesday 6th August - 9am - 4pm
Thursday 7th August - 9am - 4pm
Friday 8th August - 9am - 4pm

(Monday 25th August BANK HOL - closed)

Tuesday 26th August - 9am- 4pm
Wednesday 27th August - 9am - 4pm
Thursday 28th August - 9am - 3pm
Thursday 28th August - 5pm -7pm
Friday 29th August - 9am - 4pm



Welcome to Kettlethorpe High School

> Absence and Attendance

> Essential School
Information

Please refer to our [Parent/Carer Guide \(Click here\)](#) for important information about Kettlethorpe High School.

> Key Stage 3

Please read our [Home School Agreement \(Click here\)](#).

> Year 7

> Year 8

> Key Stage 4

> Year 9

> Year 10

> Year 11

> Forms

> Newsletters

> Parental Apps

> Support

> Uniform

> Year 6 Transition

> Kindness Charter

Essential School Information



Bus Routes

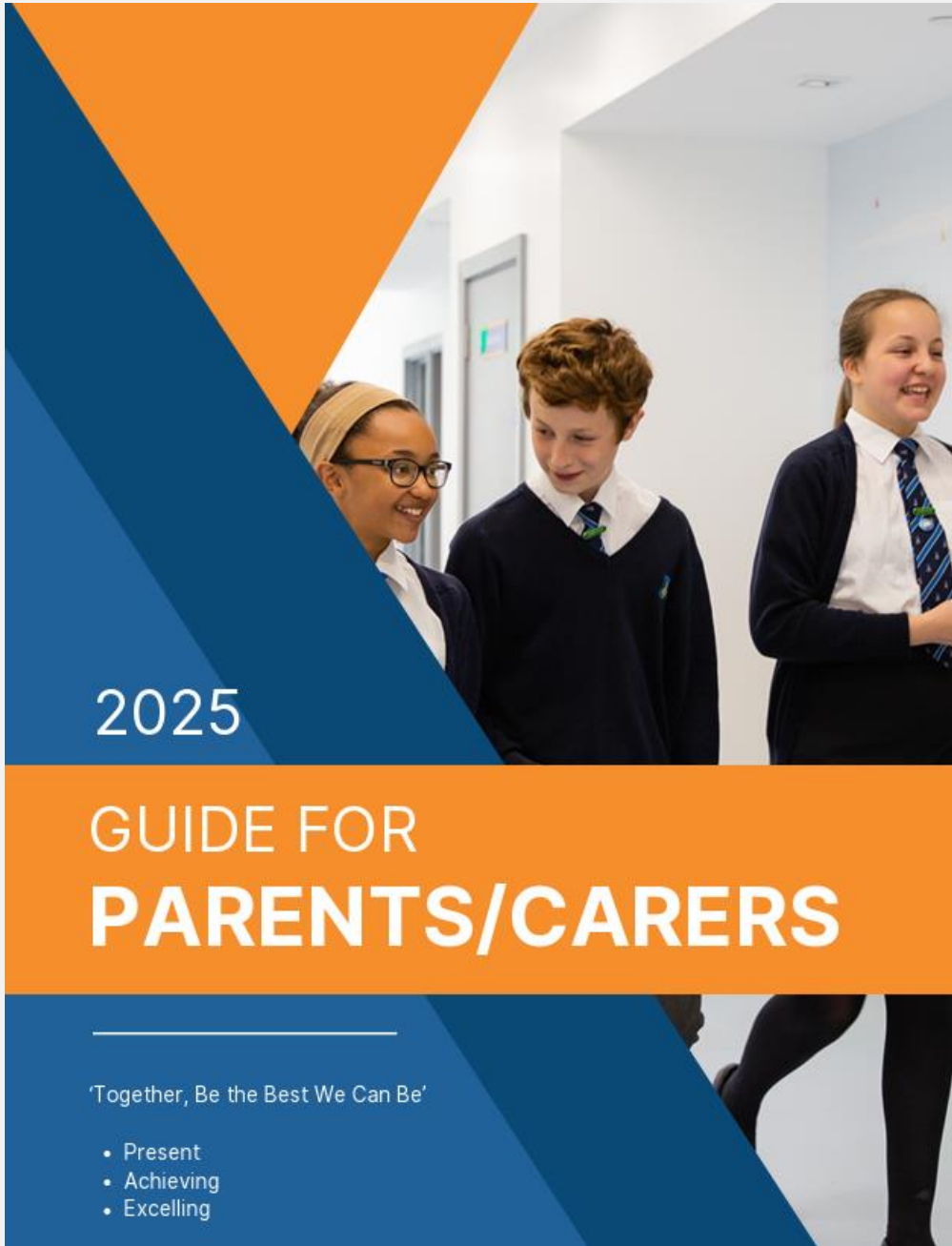


Calendar



Privacy





2025

GUIDE FOR PARENTS/CARERS

‘Together, Be the Best We Can Be’

- Present
- Achieving
- Excelling



Kettlethorpe
HIGH SCHOOL

- > Absence and Attendance
- > Essential School Information
- > Key Stage 3
 - [Please read our Home School Agreement \(Click here\)](#)
- > Year 7
- > Year 8
- > Key Stage 4
- > Year 9
- > Year 10
- > Year 11
- > Forms
- > Newsletters
- > Parental Apps
- > Support
- > Uniform
- > Year 6 Transition
- > Kindness Charter

Essential School Information

Please refer to our [Parent/Carer Guide \(Click here\)](#) for important information about Kettlethorpe High School.

[Please read our Home School Agreement \(Click here\)](#)



Bus Routes



Calendar



Privacy



Kettlethorpe High School Home School Agreement

At Kettlethorpe High School, we recognise the importance of the partnership between school and parents/carers in having a transformational effect on the secondary school experience of children in our school and their eventual outcomes and life chances. As a team around, and including every pupil, we all agree to the following actions:

As a school we will...

- provide a learning environment that is stimulating, safe and caring.
- model and develop kindness, responsibility, resilience, reflectiveness, and respect; we will teach and promote the Kindness Charter.
- promote and expect high standards of behaviour and attitude to learning.
- record and reward good progress and performance; celebrate success of all kinds, not just academic.
- consistently apply our policies so that parents/carers and children understand the importance of choices and consequences, both positive and negative.
- ensure that your child has the opportunities, support, and guidance to achieve their full potential.
- ensure staff have regular and the most up-to-date training to best support your child.
- report regularly on your child's attendance, behaviour, and academic progress.
- keep you, parents/carers, informed about school and what you can do to support your child in the above areas.
- offer extra-curricular activities, trips and enrichment opportunities that will develop broader skills to prepare for life and the world of work.
- reflect and review in good faith if we make a mistake.

As a parent/carer I will...

- promote kindness, responsibility, resilience, reflectiveness, and respect; I will understand the Kindness Charter.
- always make sure my/our child attends school, unless for approved circumstances.
- make sure my/our child attends school on time, in correct uniform and with the correct equipment.
- make sure I check my/our child's attendance, behaviour, homework, and sign the planner each week.
- attend consultation evenings and discussions about my/our child's progress.
- download and create accounts to Edulink and Class Charts, which are key communication tools for behaviour and communication; I will check these regularly.
- ensure I understand the behaviour policy and support school with teaching my/our child the importance of high standards.
- work with school when I am asked to support with my/our child's behaviour or learning.
- ensure I understand the Kettlethorpe High School's values and expectations surrounding the 4 Rs and the Kindness Charter, and work with my/our child at home on these.
- encourage my/our child to participate in the extra-curricular opportunities offered by the school.
- support all other of Kettlethorpe High School's policies and guidelines as outlined in the Parent/Carer Guide and website.

As a pupil I will...

- demonstrate kindness, responsibility, resilience, reflectiveness, and respect; I will follow the Kindness Charter.
- attend school in correct uniform, be on time and with the correct equipment.
- work hard in class and at home, so that I can achieve my full potential.
- understand that I belong in this community; I will know that my positive actions make the school a better place.
- understand that I will be rewarded for getting it right.
- follow all instructions first time, every time; I will understand that sanctions are in place for a reason to help me improve my behaviour and accept them if given.
- use my planner to organise my homework and record my achievements.
- complete homework on time; ask for help if struggling.
- represent the school positively outside in the community.
- care for our environment – in and out of school – by putting rubbish in bins and looking after resources.
- attempt and regularly take part in extra-curricular activities, trips and enrichment offered by the school.

Kettlethorpe
HIGH SCHOOL

Kettlethorpe
HIGH SCHOOL

By choosing to work at this school, send my child to this school, or attend this school, I commit to meeting these expectations.

Top tip! Search function on the website



The image shows a screenshot of the Kettlethorpe High School website. At the top left, the school's name "Kettlethorpe HIGH SCHOOL" is displayed in white and orange text. In the top right corner, a search bar with the placeholder text "Search..." and a magnifying glass icon is highlighted with a red circle. Below the header is a navigation menu with links for Home, About Us, Parents/Carers, Curriculum, Ofsted, News, Vacancies, and Contact us, along with social media icons for Facebook, Twitter, and VLE. The main content area features a blue banner with the school's name and "Uniform Shop" in large white text, followed by "Summer Opening Times" in orange text. Below this, there are two columns of photos showing students in school uniforms. The central text lists the opening hours for the uniform shop from Monday 4th August to Friday 8th August, with a note that Monday 25th August is a bank holiday and the shop is closed. The opening hours are: Monday 4th August - 9am - 4pm, Tuesday 5th August - 9am- 3pm, Tuesday 5th August - 5pm - 7pm, Wednesday 6th August - 9am - 4pm, Thursday 7th August - 9am - 4pm, and Friday 8th August - 9am - 4pm. The bank holiday note is: (Monday 25th August BANK HOL - closed), followed by Tuesday 26th August - 9am- 4pm, Wednesday 27th August - 9am - 4pm, Thursday 28th August - 9am - 3pm, Thursday 28th August - 5pm -7pm, and Friday 29th August - 9am - 4pm. At the bottom of the page, the text "Welcome to Kettlethorpe High School" is displayed.

Kettlethorpe
HIGH SCHOOL

Home About Us Parents/Carers Curriculum Ofsted News Vacancies Contact us

Kettlethorpe
HIGH SCHOOL

Uniform Shop

Summer Opening Times

Monday 4th August - 9am - 4pm
Tuesday 5th August - 9am- 3pm
Tuesday 5th August - 5pm - 7pm
Wednesday 6th August - 9am - 4pm
Thursday 7th August - 9am - 4pm
Friday 8th August - 9am - 4pm

(Monday 25th August BANK HOL - closed)
Tuesday 26th August - 9am- 4pm
Wednesday 27th August - 9am - 4pm
Thursday 28th August - 9am - 3pm
Thursday 28th August - 5pm -7pm
Friday 29th August - 9am - 4pm

Welcome to Kettlethorpe High School

A Day in Your Child's Life

Y6 Transition - Kettlethorpe High School



Kettlethorpe
HIGH SCHOOL



Mrs V Shute

Values and Expectations

We are kind. We are Kettlethorpe

We are **respectful**. We...

- > follow staff instructions first time, every time
- > use respectful language towards others
- > look after school property and the environment
- > respect everyone, regardless of their gender, race, religion, sexuality, physical appearance or ability
- > include everyone, even if their beliefs and ideas are different to our own
- > respect personal space, privacy and boundaries

We are **responsible**. We...

- > take full responsibility for our own actions
- > are ready to learn and prepared with equipment
- > follow the school uniform policy
- > are kind, supportive and compassionate
- > do not use derogatory language, harass or name call, or do things that hurt others
- > challenge those who discriminate, show disrespect and make fun of others



We are **resilient**. We...

- > never give up trying and take risks
- > are able to recover quickly from a setback
- > develop a positive attitude to learning
- > use staff feedback in order to improve
- > always strive to use kind words and actions and be the best version of ourselves

We are **reflective**. We...

- > are able to describe our progress
- > learn from feedback, experiences, feelings and responses and can analyse them
- > think about next steps and set targets in our learning
- > think about when we have used unkind words and actions and seek to improve where this has happened

Kettlethorpe
HIGH SCHOOL



Kettlethorpe
HIGH SCHOOL

KETTLETHORPE HIGH SCHOOL'S Kindness Charter

1.



We are kind, supportive and compassionate. We treat everyone in our school community as we would like to be treated in return.

2.



We respect everyone, regardless of their gender, race, religion, sexuality, physical appearance or ability. We value everyone, even if their beliefs and ideas are different to our own.

3.



We do not use derogatory language, harass or name call, or do things that hurt others - in person or online. We are kind in our words and in our actions.

4.



We challenge those who use unkind words and actions that discriminate, show disrespect or make fun of others. We are not bystanders. We support each other.

5.



We respect personal space, privacy and boundaries. We listen, when people ask us to do this, and stop and change our words and actions.

We promise that members of staff at Kettlethorpe High School will never ignore or dismiss concerns or reports of unkind behaviour.

*We are kind.
We are Kettlethorpe.*

**Kettlethorpe
HIGH SCHOOL**



**Kettlethorpe
HIGH SCHOOL**

The Kettlethorpe Way

'Together, be the best we can be'

Present – Achieving – Excelling

Be Ready

Be Present

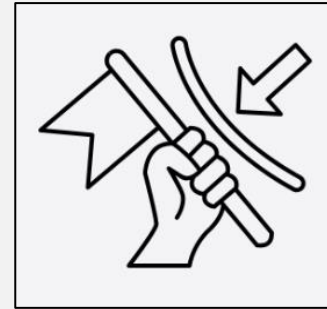
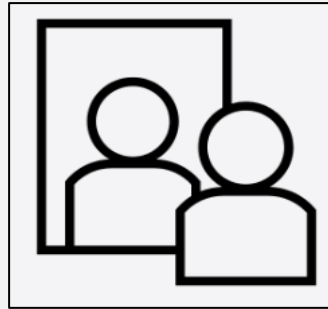
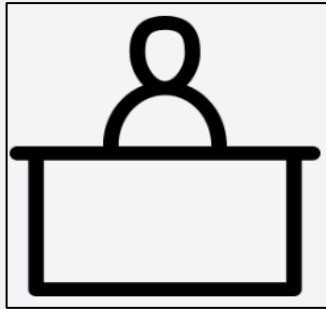
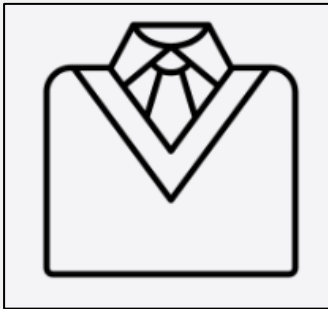
Be Responsible

Be Reflective

Be Resilient

Be Respectful

Be Kind



I arrive on time following the one-way system.

I wear the correct uniform, and I am fully equipped.

I have my planner at all times.

I start learning immediately.

I stay in lesson and only use toilets & water fountains before school, at break, lunch or after school.

I fully engage with my learning when in lessons.

I respond to instructions first time, every time.

I sit in the correct seating plan.

I do not have or use mobiles or smart watches.

I act on feedback both on my work and my behaviour.

I learn from mistakes.

I never say “I can’t...”

I don’t give up on my learning.

I attend all lessons.

I keep my hands to myself.

I move calmly and quietly around school.

I respect my environment in and around school.

I am kind to all, including myself. Always.

I communicate politely with everyone; I reply to greetings.



Mrs V Shute

Transition Timeline and Next Steps


Dates for your Diary

- **Summer Activities** – English and Maths Workbooks (recommended)
- **Wednesday 3rd September** – Y7 and Y11 only
- **Friday 12th September** – Mission Out
- **Thursday 25th September** - Y7 Tutor Evening
- **Wc/ 20th October** – Y7 Report 1 (Attendance, ATL, Reading Age)




Summer Activities

Kettlethorpe High School
ENGLISH
DEPARTMENT



*Summer
Reading
& Writing*

Name: _____
Primary School: _____



Sparx Maths

Transition Workbook

Year 6 to Year 7



sparxmaths.com



Recommended Reading List

Recommended Reading



This is the story about how one ordinary nine-year-old child and three classmates are full of empathy for Ahmet, a boy that comes to their school as a refugee from Syria (he is the boy at the back of the class).

Through their sensitivity, curiosity, ingenuity, bravery and innocent niceness, they make a massive impact on Ahmet's life, friends, class, school, community and wider world.



After the misery of life with his ghostly aunt and uncle, Harry Potter is delighted to have the chance to embark on an exciting new life at the Hogwarts School of Wizardry and Witchcraft. Learning about magic and making new friends, he has the chance to use his new-found wizarding skills to unravel some of the mysteries of his own past - and to uncover some shocking secrets about his teachers.



When the Pevensie children - Peter, Susan, Edmund and Lucy - step through a wardrobe door in the strange country house where they are staying, they find themselves in the land of Narnia. Frozen in eternal winter, Narnia is a land of snow and pine forests, and its creatures are enslaved by the terrible White Witch.



Matilda is not yet five years old, and already she is a very unusual child. Teaching herself to read, she works her way through all the books in the children's library and then gets started on the adult section, to the amazement of the librarian. Her narrow minded parents don't notice that they have a genius in their midst - but is soon becomes clear that underestimating Matilda is a big mistake.

Recommended Reading



This collection of 50 real-life tales from around the world spans a period of more than 75 years and spotlights the remarkable achievements, both on and off the pitch, of a variety of football heroes.



A variety of short stories and extracts from Michael Morpurgo, 'The Nation's Favourite Storyteller' are collected in this lovely gift edition. Divided into five sections that cover the writer's major themes - memories, animals, war, the sea and famous tales retold - this book is a real box of delights, tempting readers to dip in time and time again.



Cameron desperately needs a new heart when he is offered the opportunity to take part in a radical and controversial experiment involving the transplant of a pig's heart. While Cameron soon comes to terms with the idea, he finds the world around him less accepting. A powerful and thought-provoking read.



The Bad Beginning is the first of 13 volumes in the appropriately named collection, A Series of Unfortunate Events.

The conically dark tale centres around three children, Violet, Klaus and baby Sunny, whose parents are killed in a fire which also destroys their home - a tragic event which sets the tone for the rest of the book. Sent to live with Count Olaf, a distant relative, their unsettled lives take a turn for the worse. Count Olaf treats the children like slaves, ordering them to cook, clean, fetch and carry for him and forcing them to share a single, filthy bedroom, with only one bed.



Mission Out

- Friday 12th September – all day
- Full details to be provided in first week (all day trip)
- No cost to pupils
- Consent and medical information must be given, or your child will not attend; **this is done on the data collection form**
- Fully inclusive programme – alternative arrangements can be put in place where required.



Thanks and Q&A



Kettlethorpe
HIGH SCHOOL

Timetable for Induction Evening 3rd July 2025

	Forms 01 - 06	Forms 07 - 12
5 – 5.45	Tutor Group Presentation Y7 Tutor	Main Hall Presentation <ul style="list-style-type: none"> • Mrs Paul • Mr Bruce-Halliwell • Mrs Shute • Miss Caves
5.45 - 6	Changeover	
6 – 6.45	Main Hall Presentation <ul style="list-style-type: none"> • Mrs Paul • Mr Bruce-Halliwell • Mrs Shute • Miss Caves 	Tutor Group Presentation Y7 Tutor
6.45 - 7	Close and Q&A (in Main Hall) Mr Bruce-Halliwell Mrs Shute SLT SEND Miss Caves Music services - IBE	

Please note: The Uniform Shop will close at 7.30pm this evening.

Further opening times over the holidays can be found at

www.kettlethorpehigh.co.uk

Form Tutor Room Locations

01 - 06	Teacher	Room	07 - 12	Teacher	Room
701	Miss J Hussein (CMI)	MA1	707	Mr J Newton	SC1
702	Mr S Booth	EN8	708	Mr K Woodward	IT1
703	Miss G Couzens	EN10	709	Mrs N Leonard	MA8
704	Mr J Rawling	SC2	710	Mrs S Packham/ Miss C Patterson (ABR)	EN15
705	Miss E Ridley	MA5	711	Miss E Horner (SNA)	AD3
706	Miss N Millar (EBO)	TC4	712	Mrs G Greenwood/ Mrs S George	TC1

